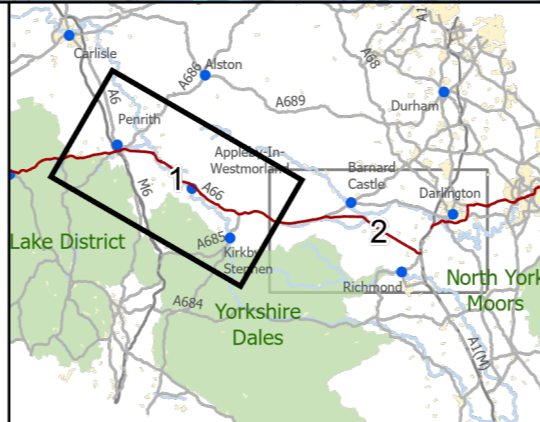
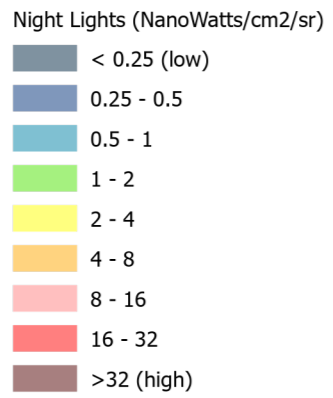
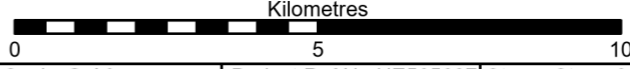


- Existing A66
- Order Limits
- Study Area 3km



3 Piccadilly Place  
Manchester  
M1 3BN

| P02      | First Issue |          |          |          |            |
|----------|-------------|----------|----------|----------|------------|
|          | PKEL        | CESL     | JSIM     | AMIT     | KWHA       |
|          | 18/03/22    | 18/03/22 | 18/03/22 | 20/04/22 | 20/04/22   |
| Revision | Created     | Checked  | Reviewed | Approved | Authorised |



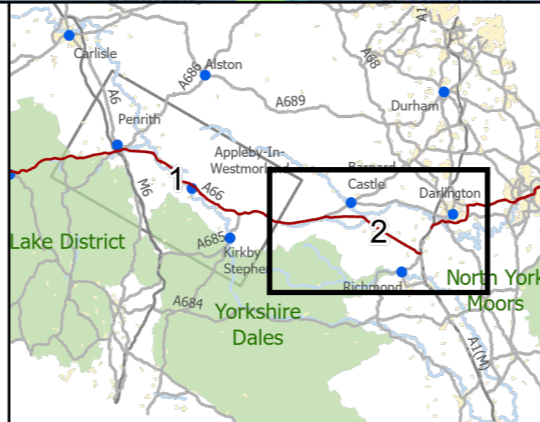
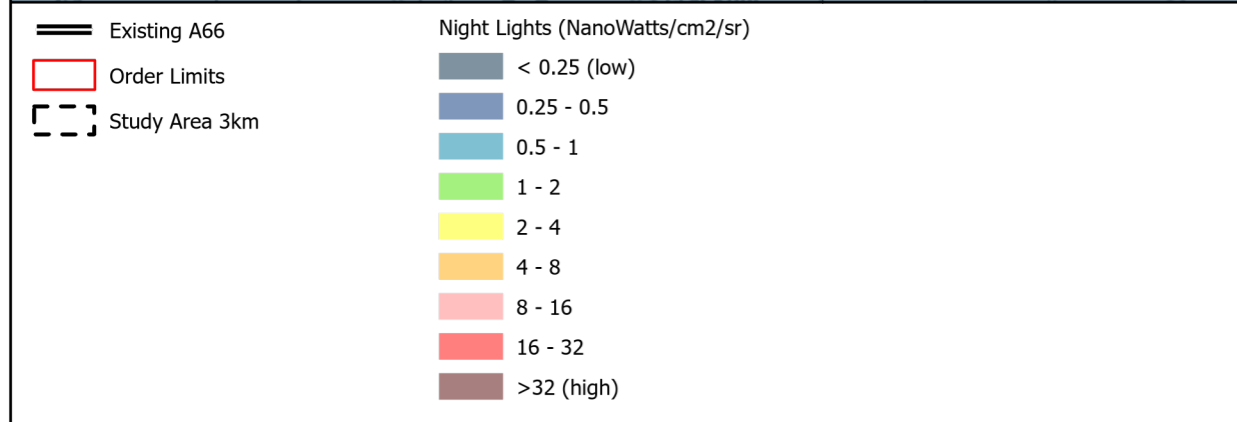
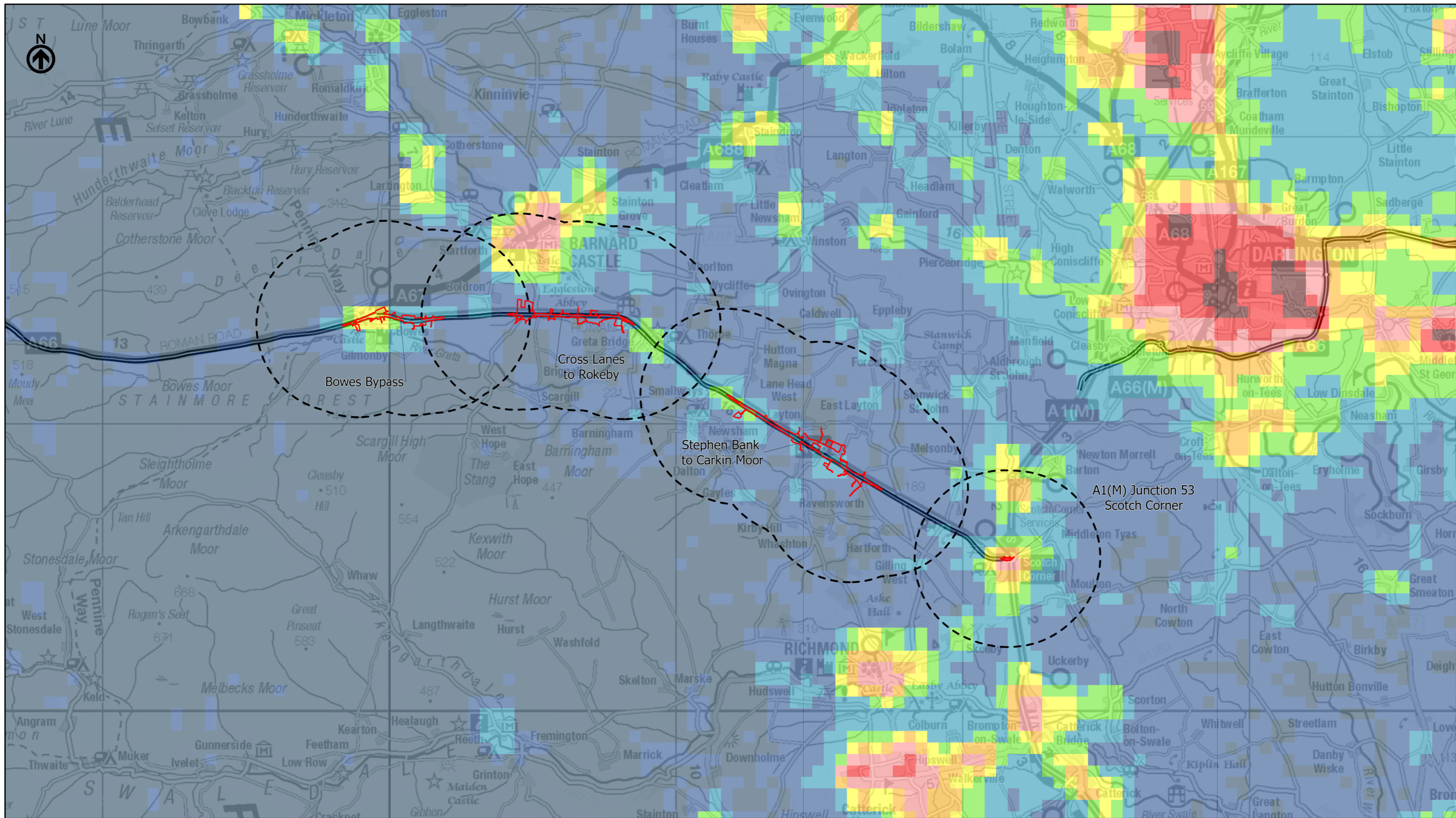
Scale @ A3: 1:125,000 | Project Ref No HE565627 | Stage: Stage 3  
 © Crown copyright and database rights (2022). All rights reserved. OS 100030649.  
 Contains public sector information licensed under the Open Government Licence v3.0  
 CPRE, the countryside charity Night Lights Data: Earth Observation Group, NOAA  
 National Geophysical Data Center. Data processed by LUC on behalf of CPRE.

Project Name  
**A66 Northern Trans-Pennine Project**

Map Title  
**Figure 10.6  
CPRE Dark Skies  
Sheet 1 of 2**

| Map Number | Project  | Originator | Volume |
|------------|----------|------------|--------|
| HE565627   | S00      | AMY        | ELS    |
|            | Location | Type       | Role   |
|            |          | MP         | LL     |
|            |          |            | 006088 |

| Suitability | Suitability Description | Revision |
|-------------|-------------------------|----------|
| S4          | FIT FOR STAGE APPROVAL  | P02      |



national highways  
 3 Piccadilly Place  
 Manchester  
 M1 3BN

| P02      | First Issue |          |          |          |            |
|----------|-------------|----------|----------|----------|------------|
|          | PKEL        | CESL     | JSIM     | AMIT     | KWHA       |
|          | 18/03/22    | 18/03/22 | 18/03/22 | 20/04/22 | 20/04/22   |
| Revision | Created     | Checked  | Reviewed | Approved | Authorised |

Kilometres  
 0 5 10  
 Scale @ A3: 1:125,000 | Project Ref No HE565627 | Stage: Stage 3  
© Crown copyright and database rights (2022). All rights reserved. OS 100030649. Contains public sector information licensed under the Open Government Licence v3.0 CPRE, the countryside charity Night Lights Data: Earth Observation Group, NOAA National Geophysical Data Center. Data processed by LUC on behalf of CPRE.

|  |  |           |                 |
|--|--|-----------|-----------------|
| Project Name<br><b>A66 Northern Trans-Pennine Project</b>            |  |           |                 |
| Map Title<br><b>Figure 10.6<br/>CPRE Dark Skies<br/>Sheet 2 of 2</b> |  |           |                 |
| Map Number<br>Project  | Originator   | Volume    |                 |
| HE565627   | AMY  | ELS       |                 |
| S00  | -  | MP - LL - | 006089          |
| Location   | Type   | Role      | Number          |
| Suitability<br>S4  | Suitability Description<br><b>FIT FOR STAGE APPROVAL</b> |           | Revision<br>P02 |